

Friendly Sound Band

Launa Leo

1st Stage			
	1	HoeHoe	G
	2	Leimomi	F
	3	Beyond the Reef	C
	4	Rose Room	G
	4'	Dark Eye	Dm
	5	Sweet Someone (or Other)	F
	6	Pikake	Bb
	7	Waikiki Chikadee	C
	8	Kanaka Nui Hotel	G
2nd Stage			
	1	Nani Waimea	Bb
	2	I'll Remember You	C
	3	Five Foot Two Eyes Of Blue	C
	4	Star Dust	F
	5	Kuu Hoa	C
	6	Pidgin English Hula	C
	7	My Tane	F
	8	Pearly Shells	G
		Dream	Bb
		Tennessee Waltz	G

Hoehoe

KEY : G

Sam Koki

INTRO : G | G# | G | E7 | A7 | D7 | G | D7 ||

G	G#	G	E7
Hukilau	huki huki huki	hukilau	ko moana i ka
A7	D7	G	F / F#
I'a la	holoholo Ka	ulua la	e- a-
G	G#	G	E7
Hukilau	huki huki huki	hukilau	_Kau mai kahi
A7	D7	G	G
moku la	hoehoe na	wa'a la	
G7	G7	C	C
Kai	_ma oki'	oki	
A7	A7	Eb7	D7
pa mai	_ka ma	ka	ni
G	G#	G	E7
Hukilau	huki huki huki	hukilau	_Kau mai kahi
A7	D7	G	D7 1.2.
moku la	hoehoe na	wa'a la	
Ending			
D7	G	D7	G
hoehoe na	wa'a la	hoehoe na	wa'a la
A7 / D7	G		
huki huki huki huki	mai _ huki!		

地引網だ 引け引け地引網
魚が泳ぐ海原の
食用魚だ それ
地引網だ 引け引け地引網
オールで漕ぐカヌーが現れた
彩られた海に風が吹く
地引網だ 引け引け地引網
オールで漕ぐカヌーが現れた
オールのカヌー
オールのカヌー

Leimomi

KEY : F

INTRO : F | Db9 | Gm7 | C7 | F | Db9 | Gm7 | C+ ||

Leimomi			
F	F	G9	G9
momi,	Leimomi	lani	Beautiful
Gm7	F#7	F6	C7
flo-	wer of	love	Truly,
F	F	G9	G9
You are	sweet as an	angel	Someone from
Gm7	F#7	F6	F6
hea-	ven a-	bove	
E7	E7	Am	Am
Take me	back to your	island	
G7	G7	C7	C7
Back to	your island	moon And	you oh,
F	F	G9	G9
love's dreams	so sweet en-	chanting	Makes all our
Gm7	F#7	F6	C+
dreams	come	TRUE	
Ending			
F	F	Gm7	F#7
TRUE	Makes all our	dreams	come
F6	F6	F6	F6
TRUE			

Beyond The Reef

KEY : C

by Jack Pitman



INTRO : Dm / G7 | G7 | C / Fm ||

C / C#-	Dm	G7	C
Beyond the	reef	Where the sea is	dark and cold
C / C#-	Dm	G7	C
My love has	gone	And our dreams grow	old
C / C#-	Dm	G7	C
There'll be no	tears	There'll be no regre	tting
C / C#-	Dm / G7	G7	C / Fm
Will she re	member me	Will she for	get?
C7	F	Fm	C / Gm6
I'll send a	thousand flowers	Where the tradewinds	blow
A7	Dm	Dm / Fm	G7
I'll send my	lonely heart	For I love her	so
G7 / C#-	Dm	G7	C
Someday I	know	She'll come back	again to me
C / C#-	Dm / G7	G7	C / Fm
'Til then my	heart will be	Beyond the	reef
Ending C / Fm	C	C6	
reef Beyond the	reef		

ROSE ROOM

KEY : G (4beat)

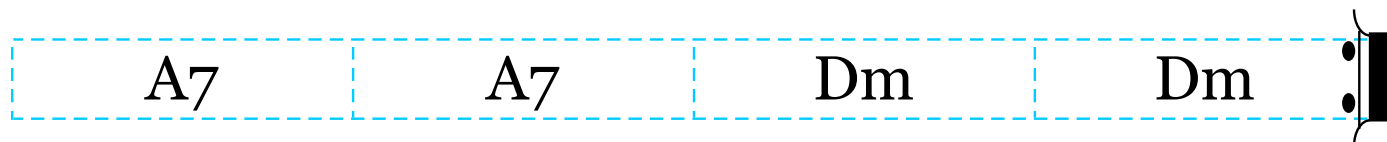
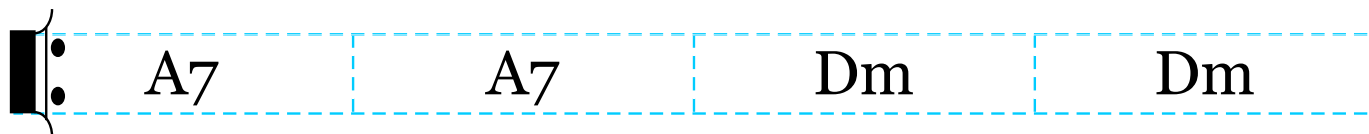
INTRO :

	A7	D7	G	G
G7	G7	C	C	
Cm	Cm	G	E7	
A7	A7	D7	E7	
A7	D7	G	G	
G7	G7	C	C	
Cm	Cm	G	E7	
A7	D7	G	G	

Dark Eyes

KEY : Dm

INTRO :






Sweet Someone

KEY : F

by George Waggner and Baron Keys

INTRO : Gm7 | C7 | Gm7/C7 | F ||

	C9 <u>Sweet</u>	C9 someone,	C9 whoever you may	C9 be
	D9 Sweet	D9 someone,	D9 you suit me to a	D9 tea,
	Gm Although you	C7 pay no attention,	F / Cm6 to me at	D7 all
	G7 One kiss and	G7 needless to mention,	Gm7 I had to	C7 <u>fall, Oh</u>
	C9 Now I	C9 wonder,	C9 who's keeping us	C9 apart,
	D9 Don't	D9 blunder,	D9 and give away your	D9 heart,
	Gm Until you	C7 whisper I love you,	F / Cm6 And then I'll	D7 know,
	Gm7 <u>Sweet</u>	C7 someone,	Gm7 / C7 that you be long to	F me 
²	F / D7 me	Gm7 sweet sweet sweet sweet	C7 someone	Gm7 that you be long
	C7 to	F me	F6 	

Pikake

KEY : Bb

by Andy Cummings

INTRO : Eb | Ebm | Bb / Fm | G7 | C7 | F7 ||

Bb (Pi) kake	Bb my flower	A7 devine	A7 Pi
Eb kake	Eb Please say you	G7 be mine	G7 Please
Cm7 say you love me	F7 too as	Bb / Fm6 much as I love	G7 you And
C7 promise to be	C7 true ever so	F7 TRUE	F7 / F+ dear Pi
Bb kake	Bb I can't let	A7 you go	A7 My
Eb poor heart	Eb Just wants you	G7 to know	G7 That
Cm7 it's so plain to	F7 see That	Bb / Fm6 you will always	G7 be Throughout e-
C7 ternity Pi	F7 ka-ke	^{1.2} Bb mine	F7 Pi
		Ending Bb / Fm6 mine	G7 Throughout e-
C7 ternity Pi	☺ F7 ka-ke	Bb mine	Bb6

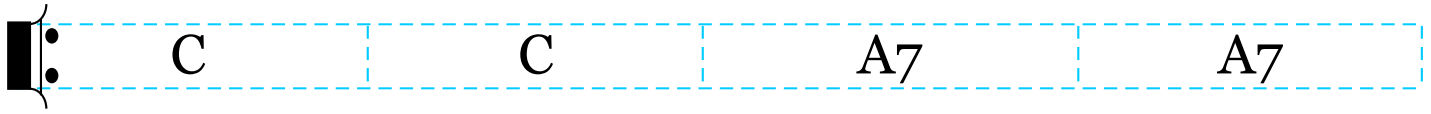
Waikiki Chickadee

KEY : C

Melvin Paoa

INTRO : F | Fm | C | A7 | D7 | G7 | C / C#- | Dm / G7 ||

I'd



like to be

at

Waikiki

with

Dm

A7

Dm

Dm

you

My little chicka

dee

G

G

C

C

Just with you

with

sky so blue

B7

B7

Em / Eb7

Dm / Db7

Holding hands

All day

through

C

C

A7

A7

And at night

the

moon above

Will

Dm

A7

Dm



Dm

tell us

we're in

love

That's why I

F

Fm

C

A7

like to be

At

Waiki

ki With

D7

G7

C / C#-

Dm / G7



you

My little chicka

dee

Ending.

C / Gm6

A7

dee

with

D7

G7

C

C6



you

My little chicka

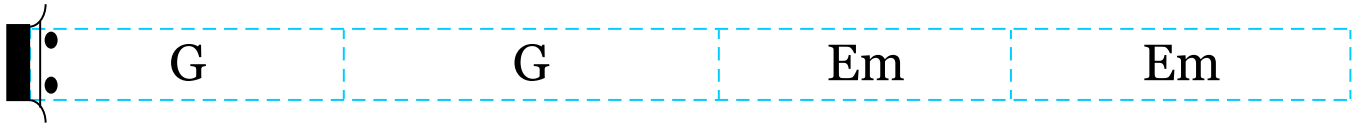
dee

Kanakanui Hotel

KEY : G

by Sam Alama & Tom Pahu

INTRO : A7 / D7 | G | A7 / D7 | G / D7 ||



1 He wahine Ka naka Inu i ka `awa ka hi`o hi`o

2 He wahine Ke pani Inu i ka sake too much daikon

3 He wahine Pake `Ai i ka licee too much saimin

4 He wahine Ha ole Inu i ka whisky to much honihoni

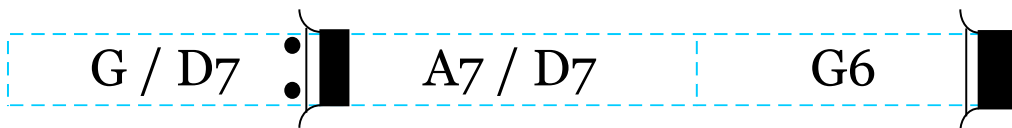


1 Sure kela Kanakanui Ho- tel

2 Sure kela Yamashiro Ho- tel

3 Sure kela Ah Leong Ho- tel

4 Sure kela Royal Hawaiian Ho- tel



1 ハワイ人の女性
アヴァを飲んで酔っ払い
正にそうだ カナカヌイホテル

2 日本人の女性
お酒を飲んで たくさん大根食べて
正にそうだ 山城ホテル

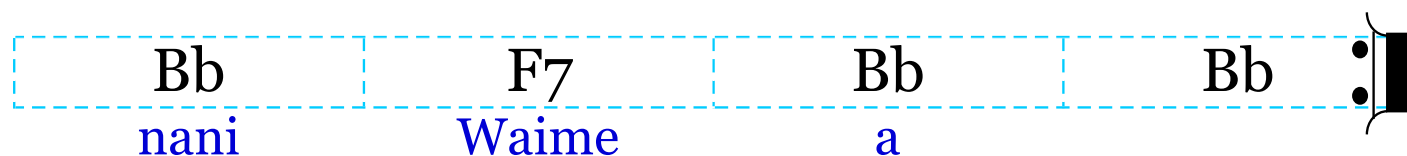
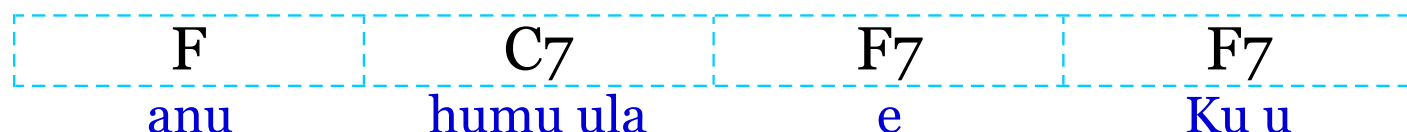
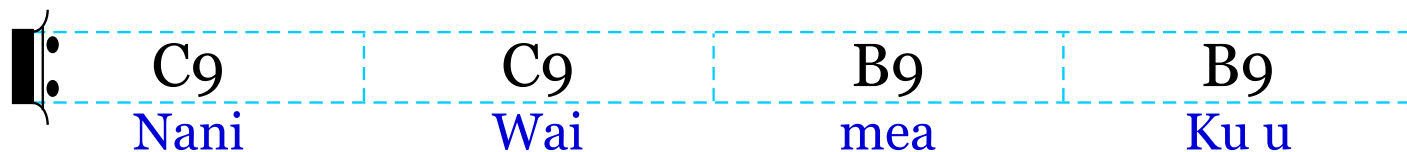
3 中国の女性
ライス食べて たくさんサイミン食べて
正にそうだ レオンホテル

4 白人の女性
ウイスキー飲んで たくさんキッス
正にそうだ ロイヤルハワイアンホテル

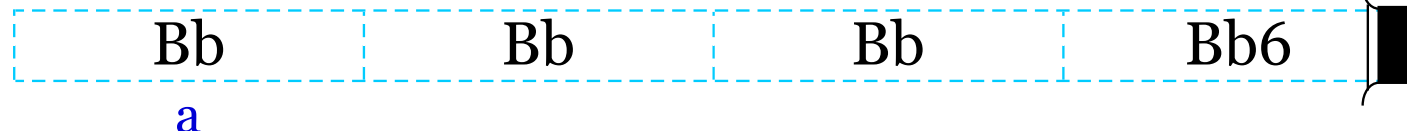
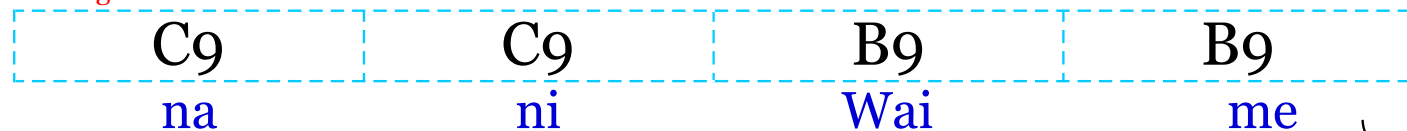
Nani Waimea

KEY : Bb

INTRO : C9 | C9 | B9 | B9 | Bb | F7 | Bb | Bb ||



Ending.







I'll Remember You

KEY : C

by Kui Lee

INTRO : C | Em | F | G7 ||

 C I'll remember	Em you	F Long after	G7 this endless
C summer is	A7 gone	Dm I'll be lonely	Fm oh so lonely
Dm Living only	G7 to remember	C / Em you	F / G7
C I'll remember	Em too	F Your voice as	G7 soft as a
C warm summer	A7 breeze	Dm Your sweet laughter	Fm mornings after
Dm Every after	G7 I'll remember	C you	C7 To your arms some
F day	D7 I'll return to	G7 stay 'Til	G7 then I will re
C member	Em too	F Every bright	G7 star we made
C wishes	A7 upon	Dm Love me always	Fm promise always
Dm Oh,oh,oh	G7 You'll remember	C / Em too	F / G7 
<div>Ending</div>			
Dm / G7 You'll remember	C too	Dm /  G7 You'll remember	C too 

Five foot two, eyes of blue

KEY : C (4beat)

by Sam Lewis, Young, and Henderson




INTRO : C / C#- | Dm / G7 | C / C#- | Dm / G7 ||

C	E7	A7	A7
Five foot two,	eyes of blue But	oh what those five	foot could do Has
D7	G7	C / C#-	Dm / G7
anybody	seen my	gal	
C	E7	A7	A7
Turned up nose	turned down hose	Never had no	other beau Has
D7	G7	C	C
anybody	seen my	gal	Now if you
E7	E7	A7	A7
run into	five foot two	covered in	fur
D7	D7	G7	D7 / G7
		GG#AA#	B_A#A
Diamond ring and	all those things	Bet your life it	isn't hers
C	E7	A7	A7
Could she love	could she woo	Could she Could she	could she woo Has
D7	G7	C / C#- 1.2.	Dm / G7 :
anybody	seen my	gal	
Ending			
C / Gm6	A7	D7	G7
gal	Has	anybody	seen my
C	C6		
gal			

Stardust

KEY : C

INTRO :

	F6	F6	F6	Fm
C	A7	Dm / A7	Dm	
G7	G7 / G+	C	C	
D7	D7	G7 / Dm	G7	
F6	F6	F6	Fm	
C	A7	Dm / A7	Dm	
Fm	Fm	C	B7	
Dm	G7	C / Fm	C / C7	
Ending				
C	C			

1.2

Ku`u Hoa

KEY : C
INTRO :

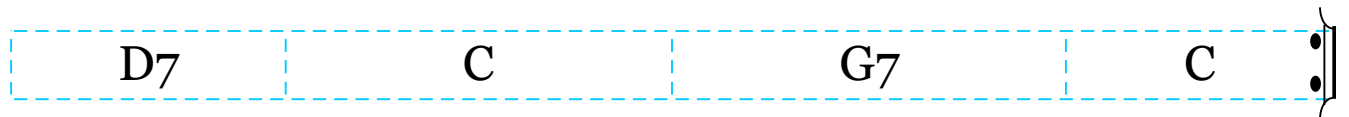
1-'1-2-'2-3-'3-4-'4

by Francis Keali`inohopono Beamer

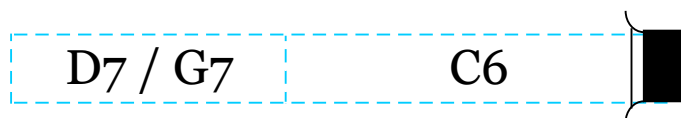
Intro 2 bamps



1) 1')	He a	lo	ha ku u	I po
2) 2')	Ho i	mai	no ka	u a
3) 3')	O ka	pa	_ko	na ne
4) 4')	Ha_	i	na maikapu	a na



1) 1')	Kuu hoa maka ona	ona noho ike kua	hi wi
2) 2')	_me au e pilie_	Kuu I ni A ka kuu	wai
3) 3')	a ka ma hinala	ahu wale noka paeo	Pu a
4) 4')	Kuu hoa maka ona	ona noho ike kua	hi wi






Pidgin English Hula

KEY : C

by Charles E. King

INTRO : G7 | G7 | C/Ab | C ||

	C Honolulu ホノルル	A7 pretty girl stop 生まれの	D7 Too muchee guru 評判むす	D7 looking め
	G7 Number one sweet あの眼が	G7 Naughty eyes make, すてきよ	C oh, oh, おー おー	C oh, oh, おー おー
	C You bet I know わたしは	A7 You no got chance しってる	D7 Nother fella she sweet あのコのうわ	D7 heart さ
	G7 But today どこかの	C / A7 pilikia got だれかに	D7 / G7 She too much huhu for アツアツなの	C him よ
	Ab Ah sa mala you last	Ab night?	C You no come see ma	C ma I t'ink so
	G7 you no likee me no	G7 more	C You too muchee like	C 'nother girl
	Ab 'Nother fella likee me	Ab too	C He number one guru look	C He too much a
	D7 loha	G7 Ha ha ha ha	G7 Ha ha ha ha	C auwe
	G7 Ha ha ha ha	G7 Ha ha ha ha	C / Ab auwe	C auwe 
	G7 Ha ha ha ha	G7 Ha ha ha ha	C / Ab auwe	C auwe 

My Tane

KEY : F

INTRO : F / Dm | Gm / C7 | F / Dm | Gm / C7 ||




F Fare	F#- well my	Gm Tane	Gm
C7 Child of the	C7 / C+ coral	F sea	Gm / C+
F You	F#- dreamed of	Gm Heaven	Gm
C7 But you for	C7 gotton	F me	F
Dm Once	Dm on	Am silv'ry sands	Am
Gm we	D7 held	Gm lone some	Db7 hands
F That's	F#- why my	Gm Tane	Gm
C7 you will come	C7 back to	F / Dm me	Gm / C7 :
Ending F me	☺ C7 I cry come	C7 back to	F me

Pearly Shells

KEY : G

INTRO : G | D7 | G / C | G ||




Pearly

	G shells	G from the	G Ocean	G7 shining in the
	C sun	C covering the	A7 shore	D7 when I
	G see them	G7 My heart	C tells me that I love	Cm you more than
	G all the	D7 little Pearly	G / C shells	G For every
	D7 grain of sand up-	D7 on the beach I've	G got a kiss for	G you, and I've got
	D7 more left over	D7 For each star that	A7 twinkles in the	D7 blue, Pearly
	G shells	G from the	G ocean	G7 shinig in the
	C sun	C covering the	A7 shore	D7 when I
	G see them	G7 My heart	C tells me that I love	Cm you more than
	G all the	D7 little Pearly	G / C shells	G (more than) 
	G all the	D7 little	D7 Pearly	G shells
	C9	G	G	

DREAM

KEY : Bb

INTRO : F7

	Bb Dream	Bb when your feeling	A7 Blue	A7
	Bb6 Dream	Bb6 that's the thing to	G7 do	G7
	Eb Just	Eb / Ebm watch the smoke rings	Bb rise in the	Bb air
	C7 You'll find your	C7 share of	Cm7 memories	F7 there So
	Bb Dream	Bb when the day is	A7 through	A7
	Bb6 Dream	Bb6 and they might come	G7 TRUE	G7
	Eb Things	Eb / Ebm never are as	Bb / A7 bad as they	D7 / Gm6 seem So
	Cm7 Dream	F7-9 Dream	Bb Dream	F7 / F+ 
Ending	F#7 Dream	Bmaj7	Bb6	

Tennessee Waltz

KEY : G - Waltz

INTRO :

G	G	D7	G
I was			
G	GM7	G7	C
dancin' with my	darlin' to the	Tennessee	Waltz When an
G	E7	A7	D7
old friend I	happened to	see	Intro
G	GM7	G7	C
duced her to my	loved one And	while they were	dancin' My
G	D7	G	G
friend stole my	sweetheart from	me	I re
G	B7	C	G
member the	night and the	Tennessee	Waltz Now I
G	E7	A7	D7
know just how	much I have	lost	Yes, I
G	GM7	G7	C
lost my little	darlin' the	night they were	playing The
G	D7	G	G
beautiful	Tennessee	Waltz	(The)
G	D7	G	G
beautiful	Tennessee	Waltz	